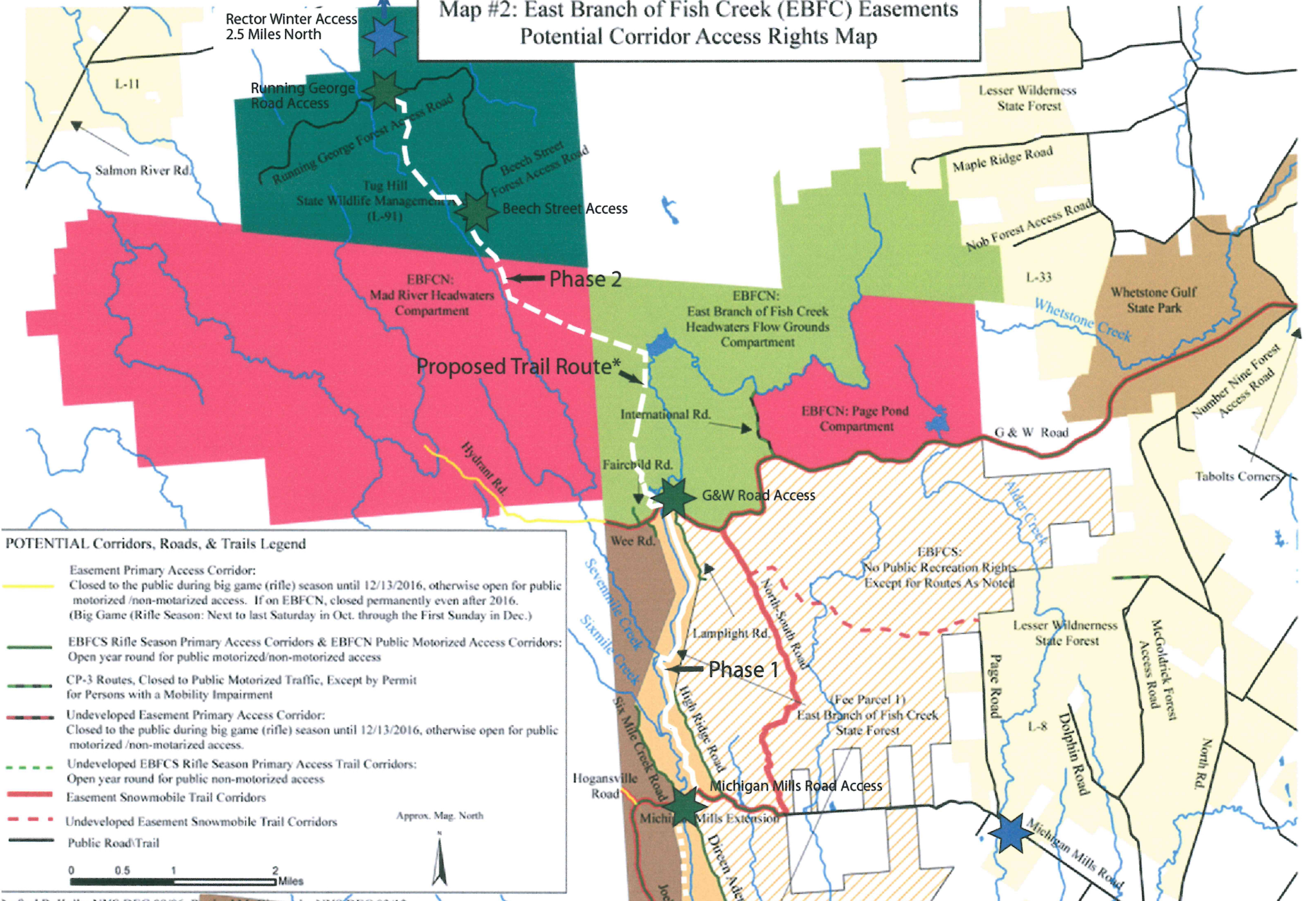


Map #2: East Branch of Fish Creek (EBFC) Easements Potential Corridor Access Rights Map



Drafted B. Kelly, NYS DEC 08/06, Revised M. Giocondo, NYS DEC 03/12

TUG HILL TRAVERSE TRAIL ROUTE, PHASING, AND LAND OWNERSHIP

- Trail Access Point (with seasonal limitations)
- Winter Access Point
- * Generalized Route, Final layout will avoid any extant easements

